

MetaSole

On-roof mounting system for PV modules
on trapezoidal sheet roofs



For simple and cost-effective mounting with only 4 system components

System use

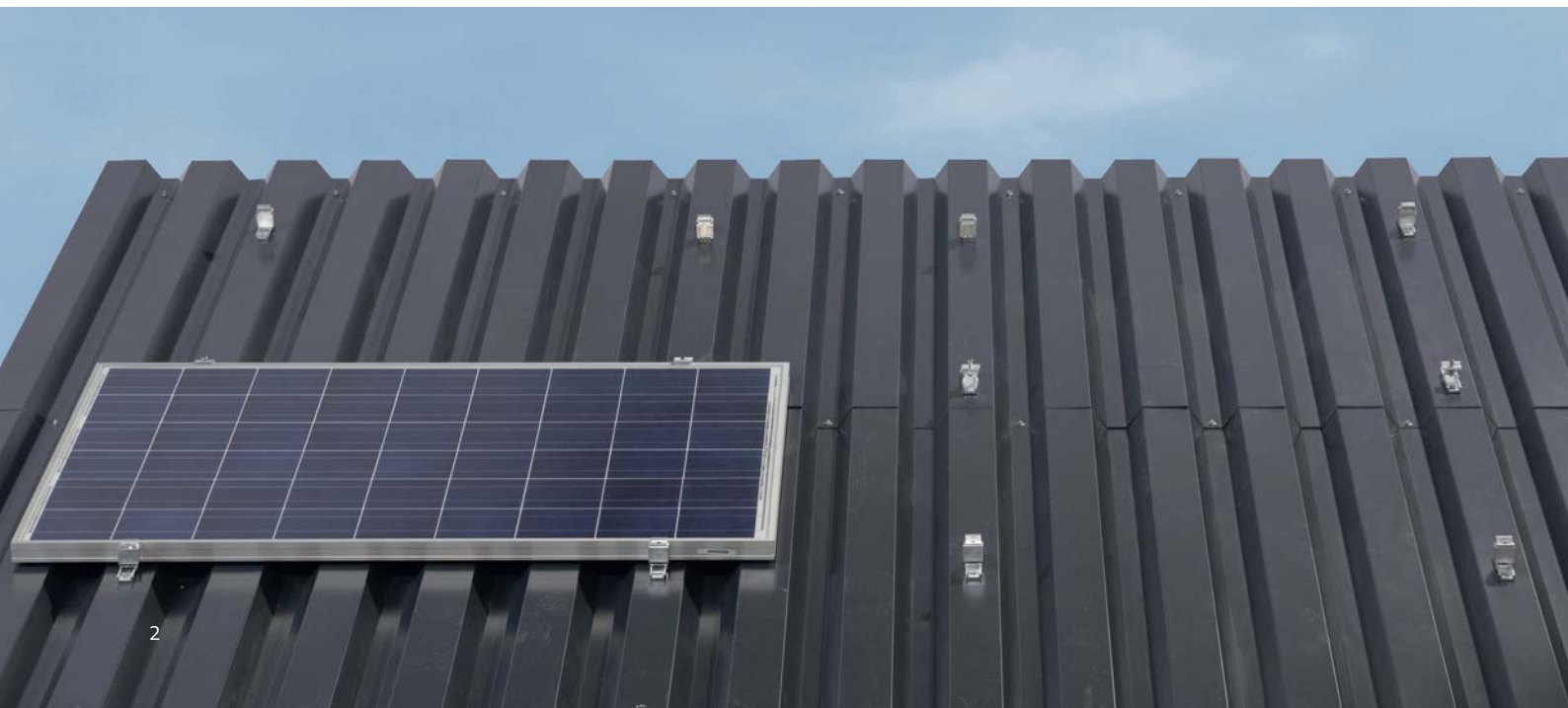
MetaSole is a complete mounting system suitable for mounting of all marketable, framed PV modules with a frame height of 34 to 51 mm and 31 mm on pitched roofs with trapezoidal steel sheet roofing. The special clamp bases of the MetaSole system are screwed directly onto the rib of the sheet. Height-adjustable end and middle clamps are slid or clicked onto the clamp bases. These provide secure support for the PV modules and enable very simple, fast mounting.

System features

- Mounting system for pitched roofs with an inclination of 5–45° and a trapezoidal sheet thickness of at least 0.40 mm (steel quality greater or equal to S280GD) Suitable up to snow load zone 3 and wind load zone 4 (according to DIN 1055).
- Waterproof mounting using clamp bases glued with EPDM rubber on the underside (leak test according to UB 5.1/10-535 by MFPA).
- Height-adjustable end clamps for 34–51 mm and 31 mm high module frames.
- Height-adjustable middle clamps for 31–51 mm high module frames.
- Vertical module orientation optional.
- High-quality and durable system components made of aluminium.
- 10-year product warranty.
- TÜV certification; construction approval DIBt Z-14.4-627 applied.

System advantages for trade and industry

- Universal mounting system with only 4 components.
- Low storage costs due to small, light and variable components.
- Optimized logistics, short-term dispatch to construction site possible.
- Variable mounting system for module frame heights of 34–51 mm and 31 mm.
- Fastening on the roof using normal self-drilling screws, no pre-drilling and no drilling template required.



4 system components and only 3 steps for mounting

Fasten clamp bases

The clamp bases are fastened using self-drilling screws on the trapezoidal sheet. The width of the ribs of the trapezoidal sheets must be at least 27 mm. With a trapezoidal sheet thickness from 0.4 to 1.0 mm, mounting takes place using an EJOT JT3-X-2-6.0 x 25 A16/2 self-drilling screw. With a trapezoidal sheet thickness from 0.75 to 1.0 mm, mounting may take place alternatively using SFS-SDK2-S-377-6.0 x 35 self-drilling screws and an SFS boring bit.



Click on the middle clamps

Simply click the middle clamps onto the middle of the already mounted clamp bases.



Mount the modules

Initially tighten the height-adjustable end and middle clamps during mounting using an Allen key and fasten using a torque wrench after placing all PV modules.



Specialist training and installation instructions for a perfect installation

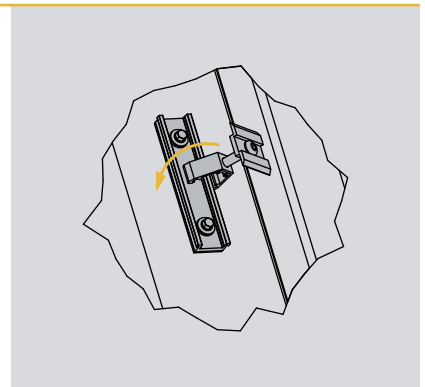
Specialist training

Renusol offers specialist MetaSole training. Both theoretical and practical technical and product knowledge is imparted in the half-day seminars. Upon request, Renusol also offers regional training courses on a wholesaler's premises. Please send inquiries regarding the exact dates and the individual courses via e-mail to or by telephone number: +49 221 788707-0.



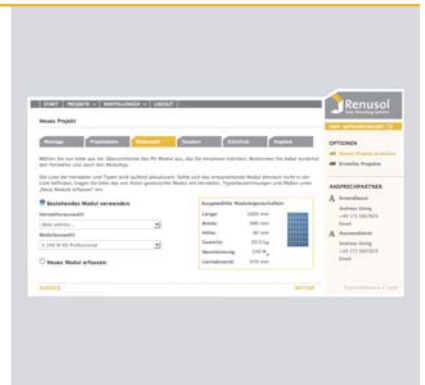
Detailed installation instructions

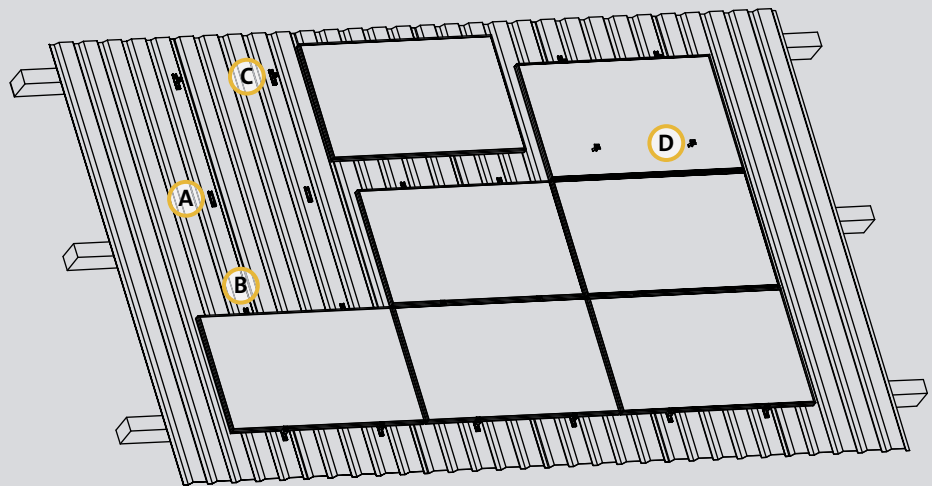
The MetaSole installation instructions explain each mounting step objectively and understandably. The relevant mounting details are shown step by step. Printed installation instructions are included with the delivery of every MetaSole. In addition, the latest version of the installation instructions are available for download at www.renusol.com.



Comfortable project planning (in preparation)

With the Renusol project configurator available online around the clock, it will also be possible in the future to configure the MetaSole mounting system for PV installations with just a few mouse clicks. The user-friendly web-configurator provides maximum comfort for individual planning and for generating an offer. Moreover, all projects are clearly managed in a password-protected area.





System overview:

- A Clamp base with EPDM
- B Self-drilling screws
- C End clamp
- D Middle clamp

Renusol – From visions to solutions

Mounting specialist

Based on the continuous dialogue with dealers and installers, our own development and design department, long years of market experience and durable system components, Renusol delivers well-thought-out mounting solutions for almost all areas of application. Solutions that are easier to plan and mount and that offer the security of perfected products.

Mounting systems

IntraSole SR and CL

Fully integrated mounting system for PV modules and laminates in pitched roofs

InterSole SE and XL*

Integrated mounting system for PV modules in pitched and industrial roofs

VarioSole SE and DS

On-roof mounting system for PV modules and laminates in pitched roofs

ConSole and DS

Flat-roof mounting system for PV modules and laminates

MetaSole

On-roof mounting system for PV modules on trapezoidal sheet roofs

TerraSole and DS

Free-standing mounting system for PV modules and laminates

* The InterSole SE and XL are considered semi-integrated mounting systems in France and integrated mounting systems in all other European countries.

Service

Information: www.renusol.com

Current participation in trade shows, the latest installation instructions and online project configurator

Contact: Tel. +49 221 788707-0 and e-mail info@renusol.com

Upcoming dates for professional training, as well as inquiries on individual regional professional training and sales visits